



# BCIG Annual Data Collection Financial Year 2017-2018

Kate Hanvey

18/09/2018

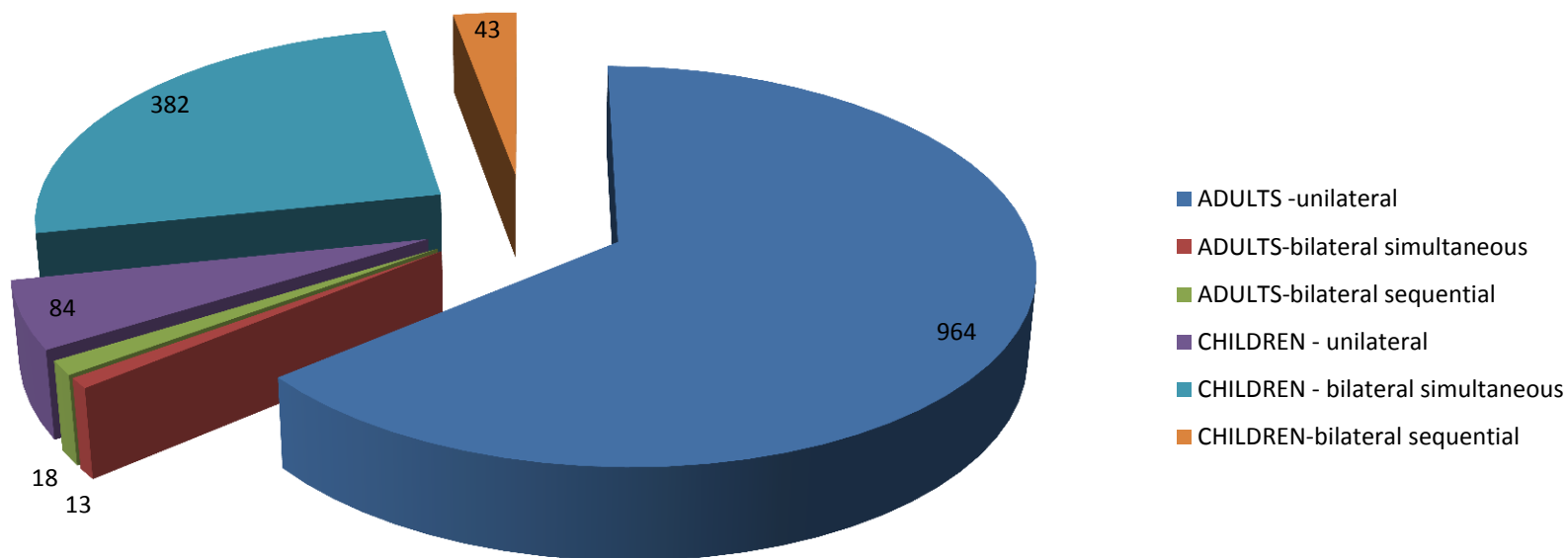
# Total number of new CI recipients

01/04/2017 - 31/03/2018

2017/2018	ADULTS	CHILDREN
UNILATERAL	964	84
BILATERAL: SIMULTANEOUS	13	382
BILATERAL: SEQUENTIAL	18	43
<b>TOTAL NEW CASES= 1504</b>	<b>995</b>	<b>509</b>

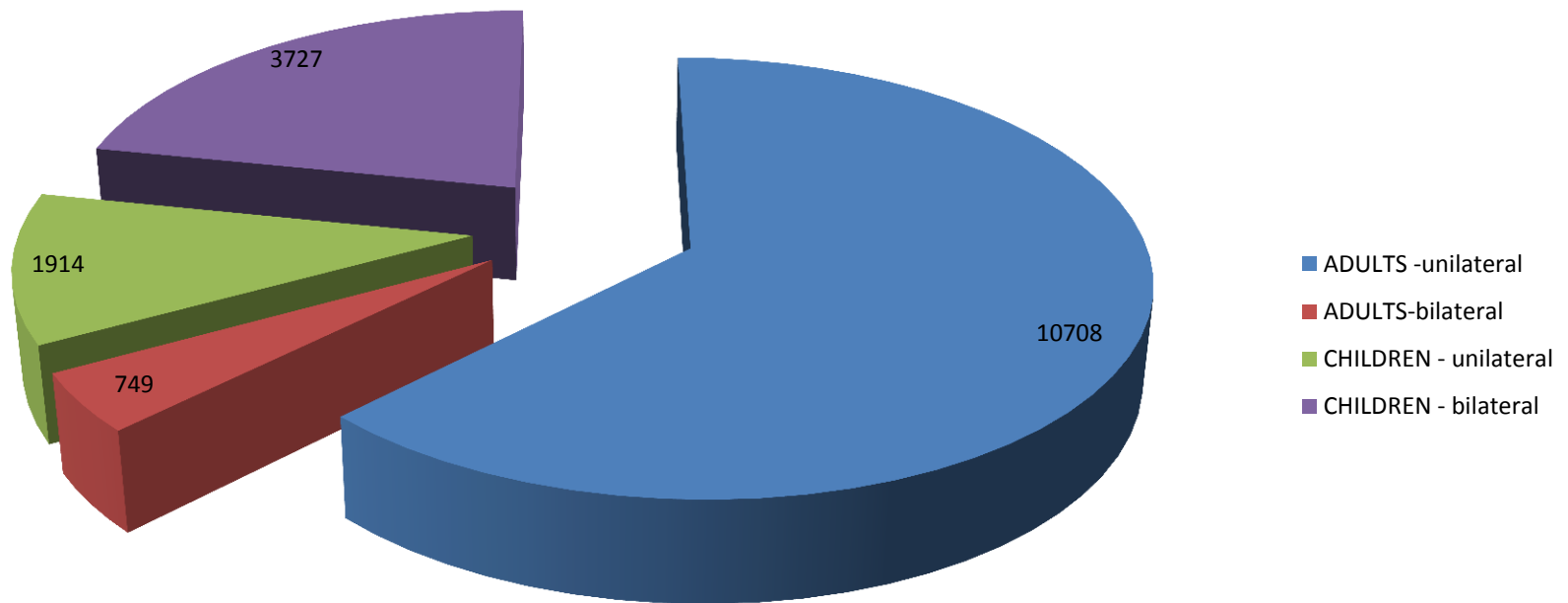


# Total Number of New CI Recipients 01/04/2017 – 31/03/2018 N= 1504

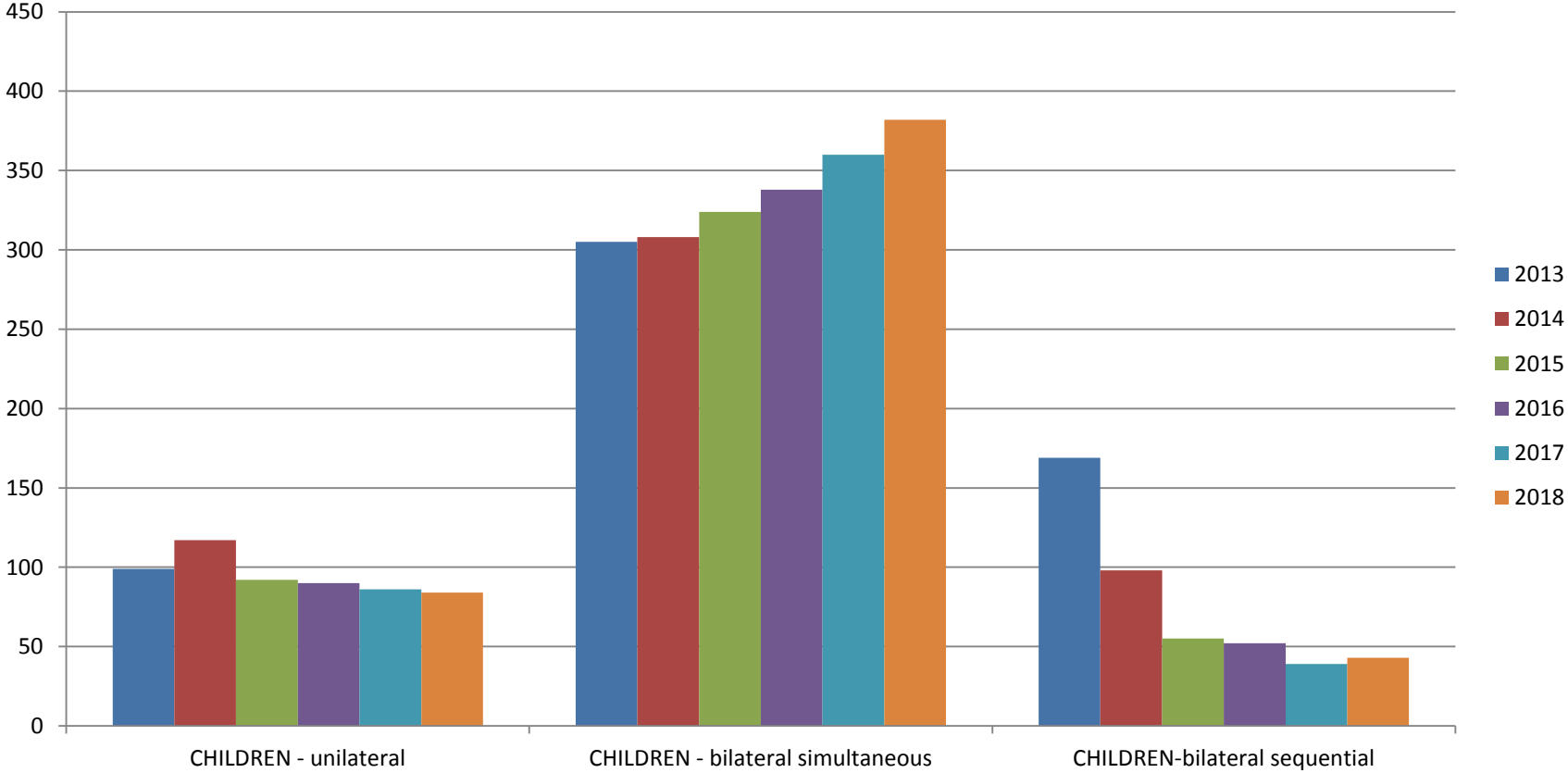


# Total Maintained CI Population in the UK

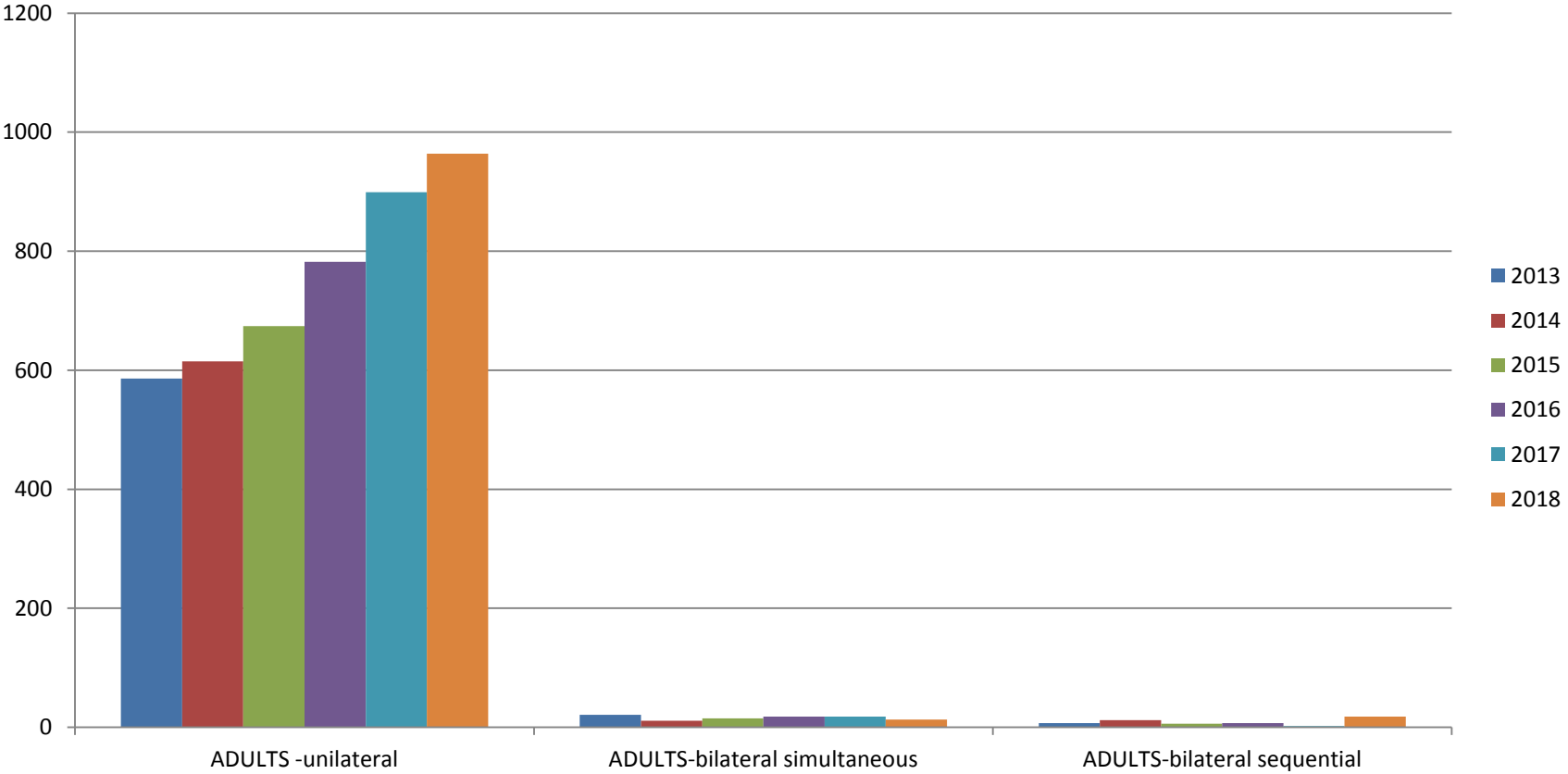
## Year ended 31 March 2018 N = 17098



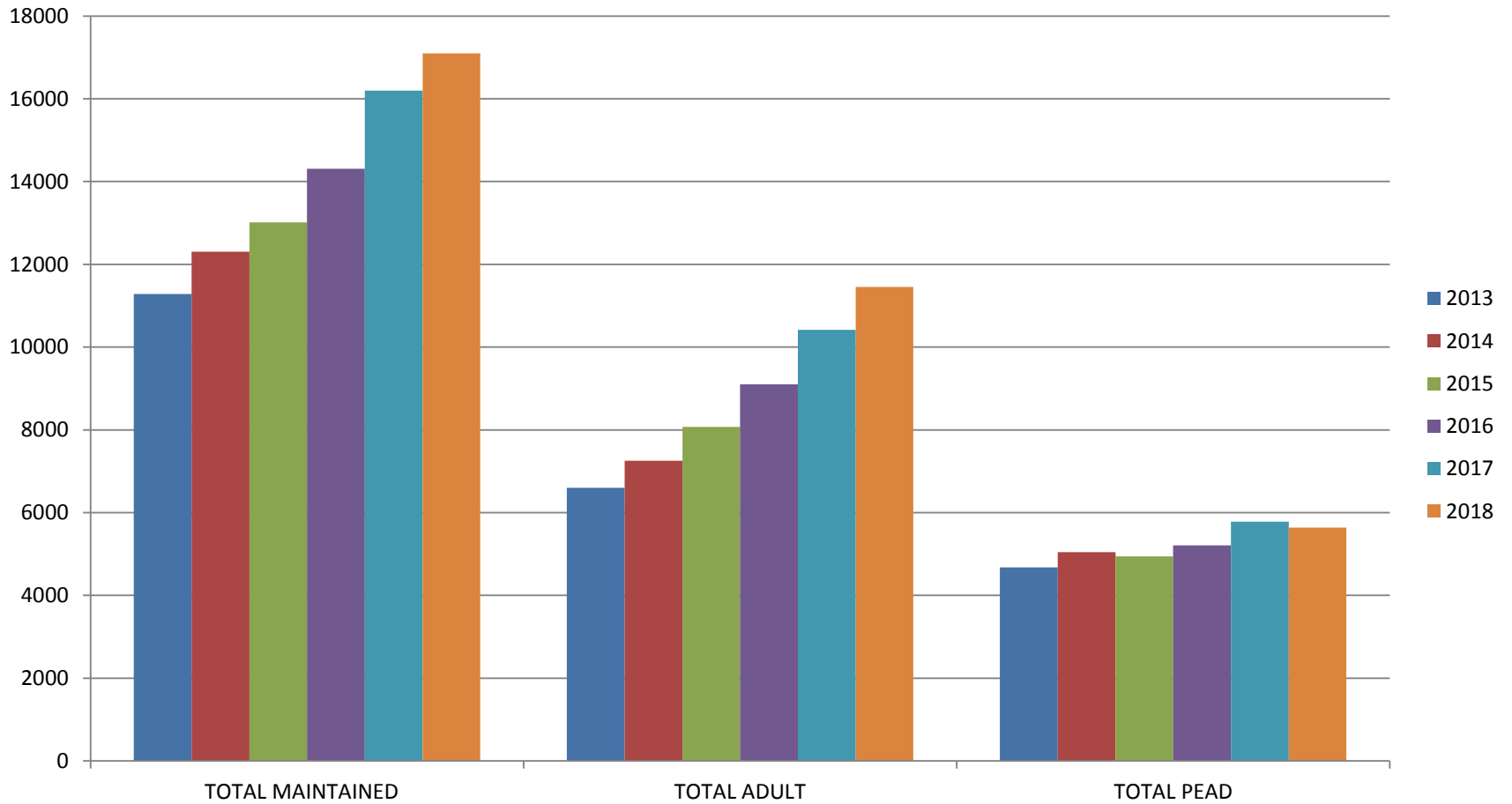
# Paediatric Trends 2013-2018



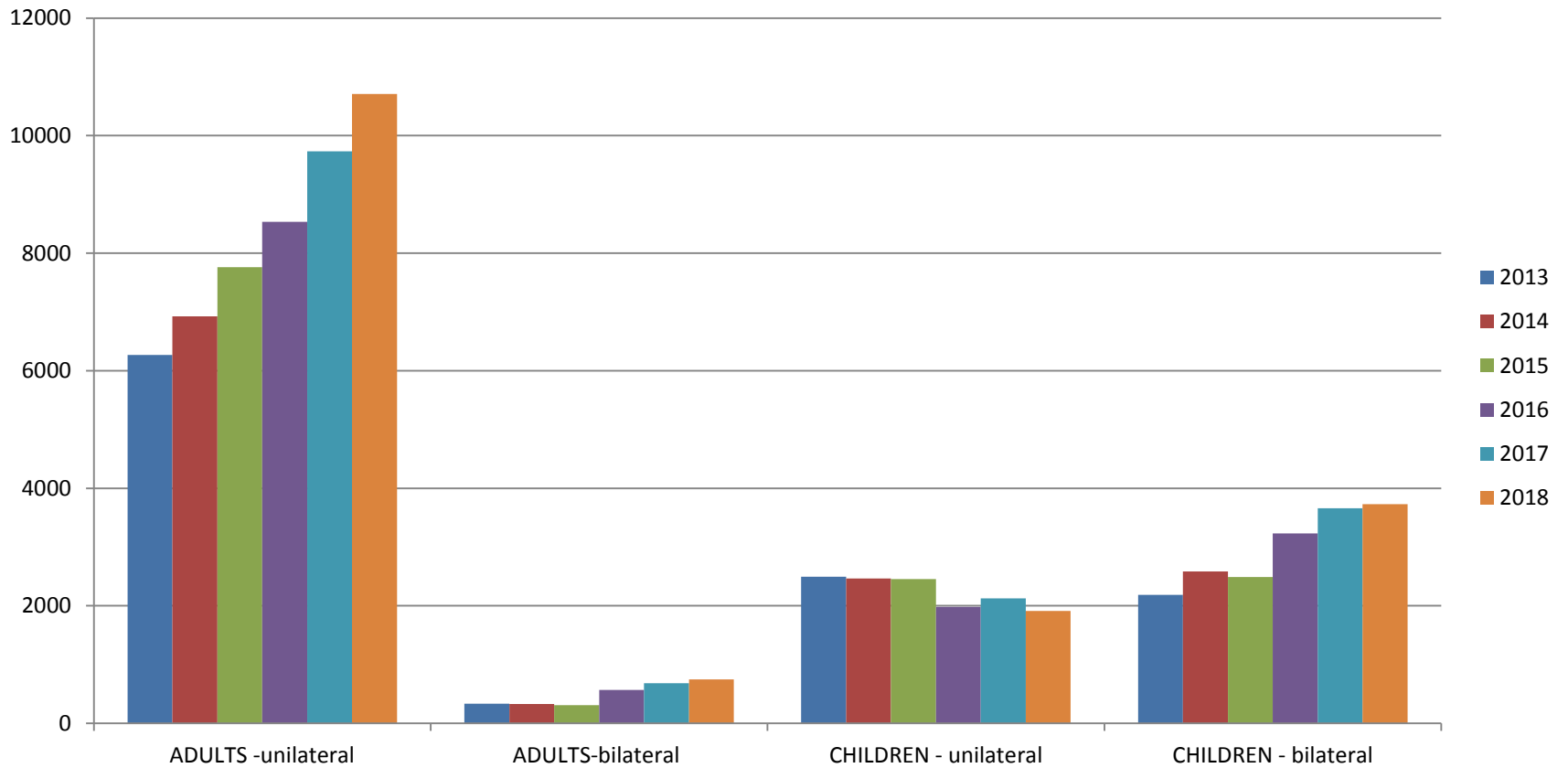
# Adult Trends 2013-2018



## Maintained 2013-2018



## Maintained Uni / Bi 2013 -2018





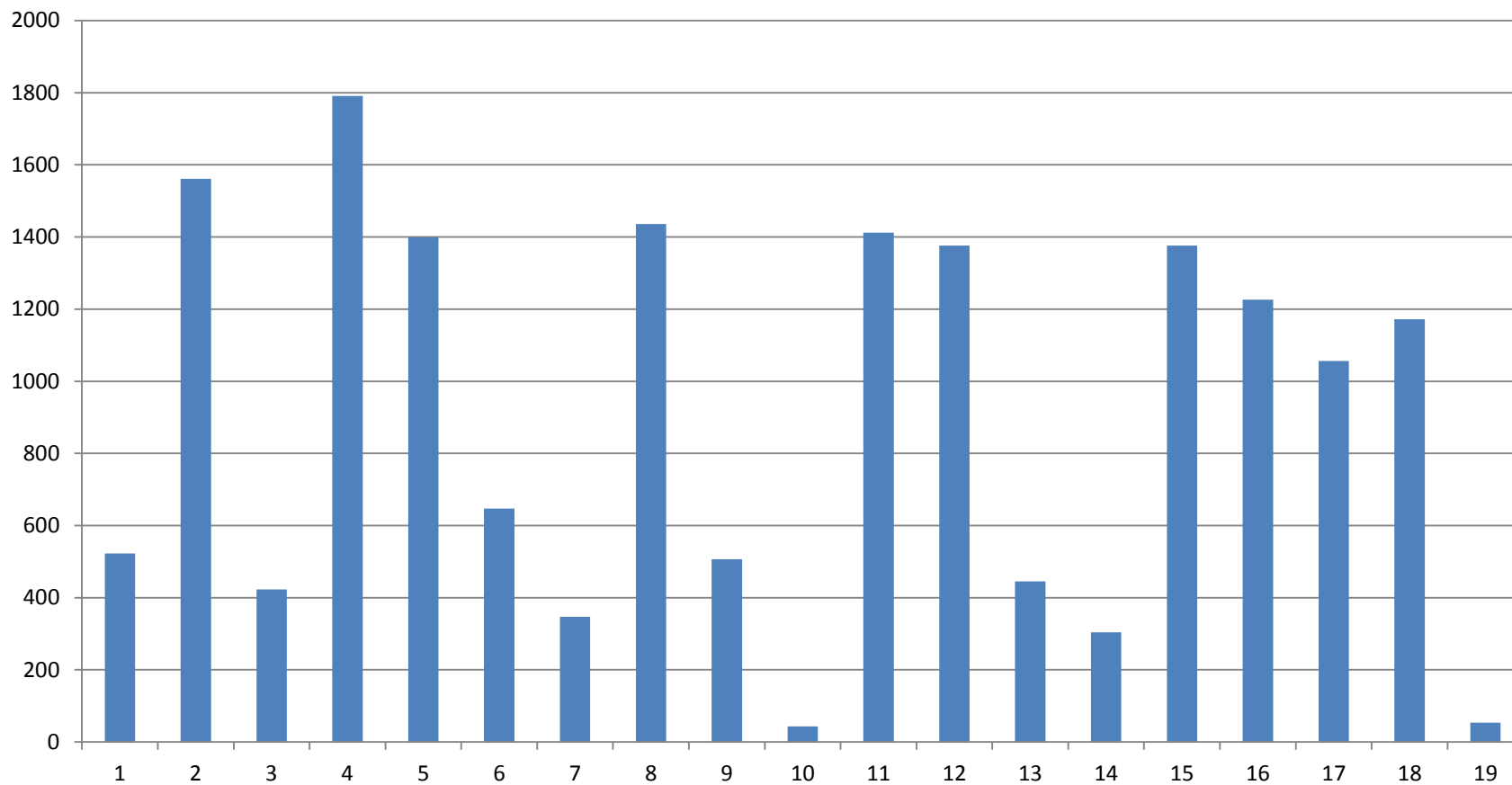
# Children - trends

- Number of bilateral surgeries is steadily rising year on year
- Total of surgeries is still lower than in 2013 due to a bumper year for sequentials
- Sequentials now only account for 8% of activity in year to 31/03/2018, compared to 29% of activity in 2013. This percentage is decreasing year on year
- Percentage of unilaterally implanted children is 17%, steadily declining by 1-2% year on year since 2014
- In the maintained population of children, 34% are now unilateral, compared to 53% in 2013

# Adults - trends

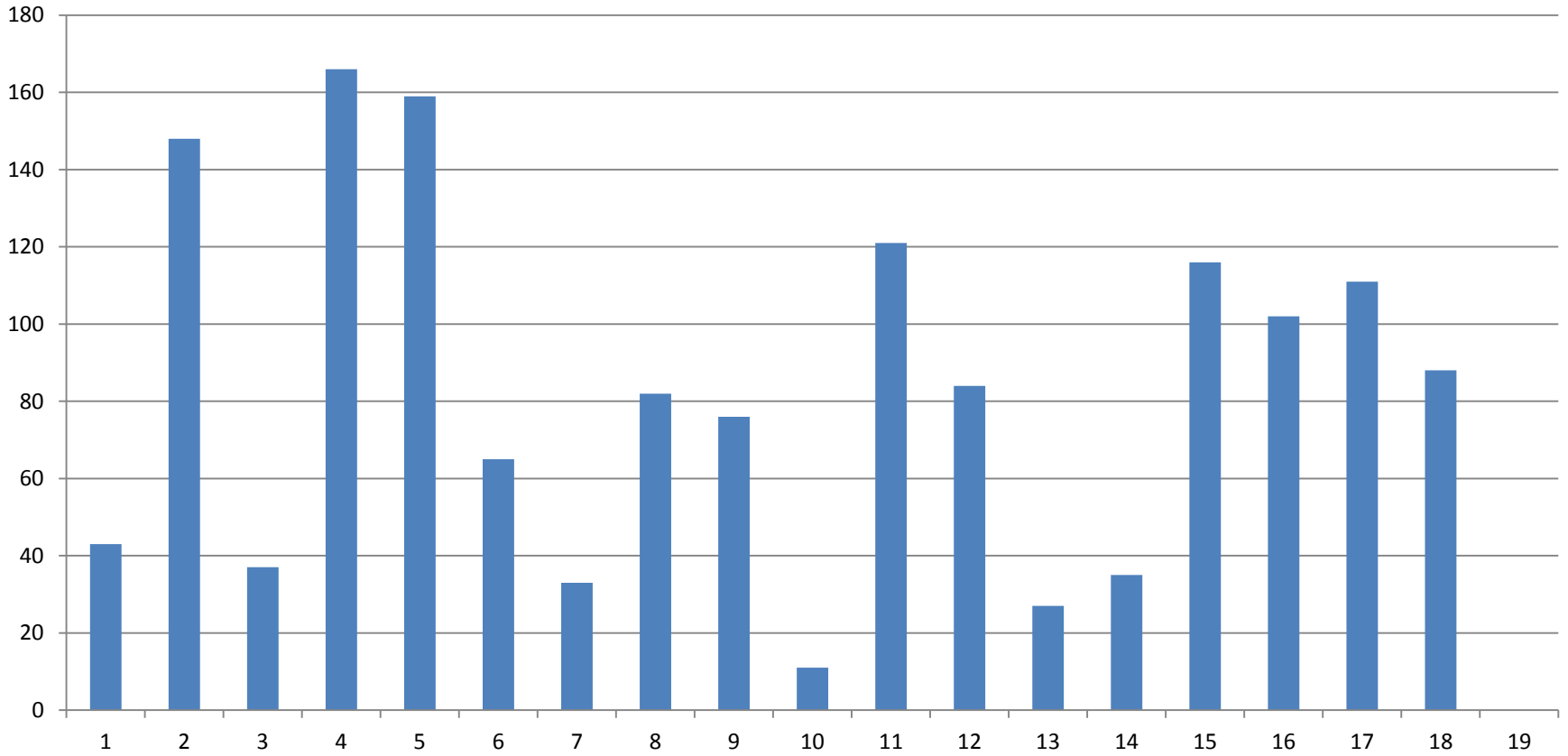
- Numbers of new adult cases has dramatically risen since 2013, by just over 50%
  - (in 12/13, total new cases = 614, in 17/18, total new cases = 995)
- Unilaterals account for 97% of the surgeries
- Simultaneous bilaterals 1 % of total

## Anon Centre Data Total Maintained at 31/03/18



# Anon Centre Data

## Total New 17/18



# Auditory Brainstem Implants (ABI)

- As of 31/03/2018:
  - 2 new unilateral adults
  - 5 new unilateral children
  
  - 70 maintained unilateral adults
  - 26 maintained unilateral children
  - 1 maintained bilateral adult
  - 1 maintained bilateral child

